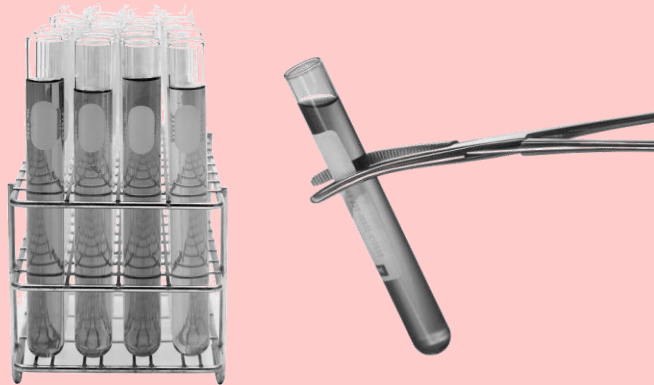


# Science Displays .

## Unit 1 A: Ourselves

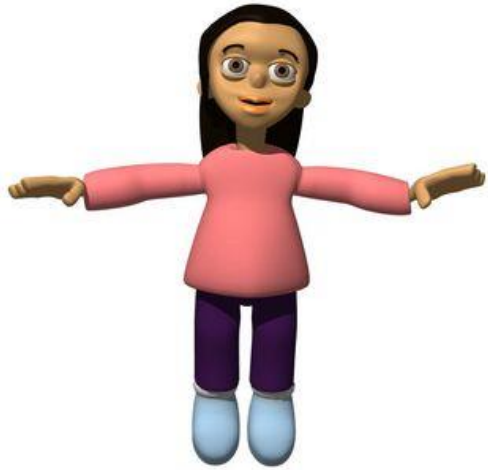


**SCHOOLS**  
 **LINKS**

[schoolslinks.co.uk](http://schoolslinks.co.uk)

# Ourselves





**human**



**animal**



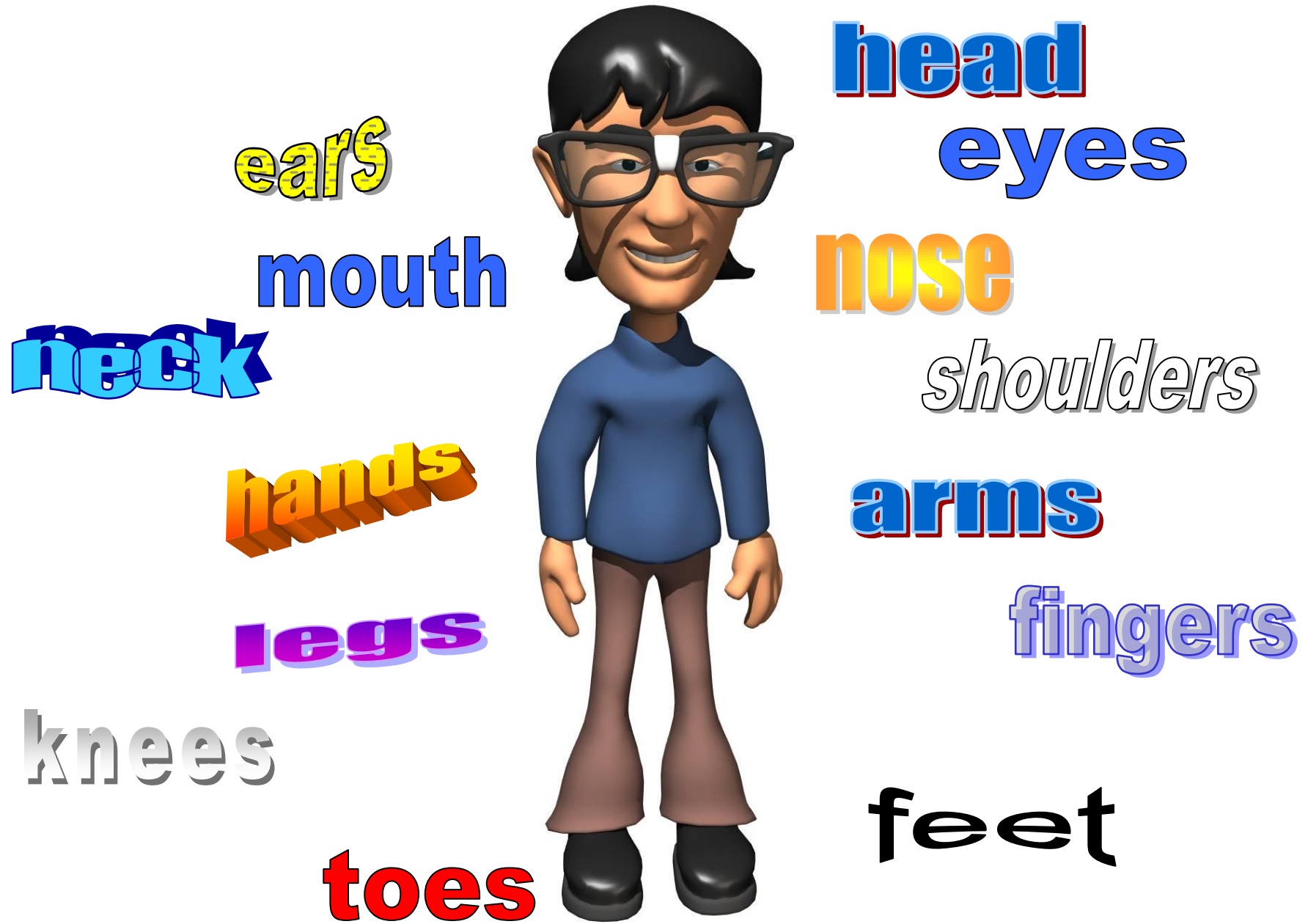
*alive*



*not alive*

*similar*

*different*



head

eyes

nose

shoulders

arms

fingers

feet

ears

mouth

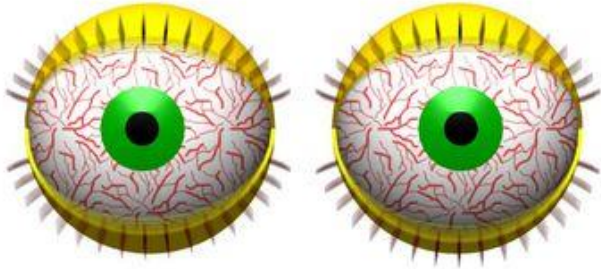
neck

hands

legs

knees

toes



sight



hearing



smell

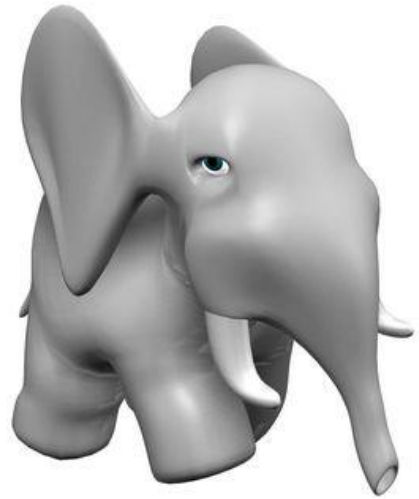


taste

Senses



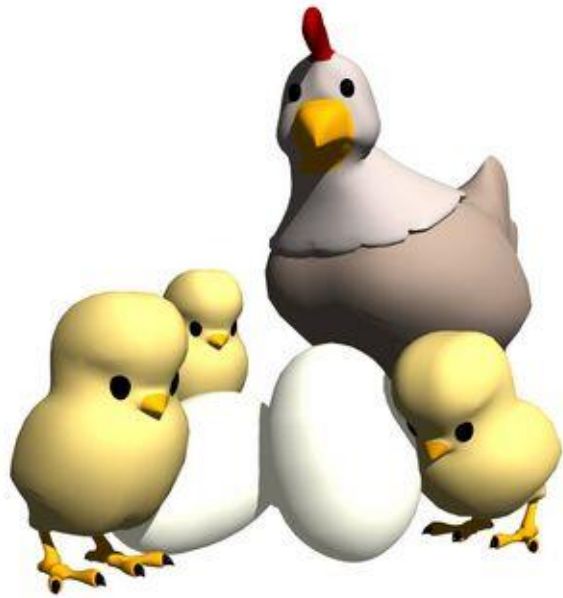
touch



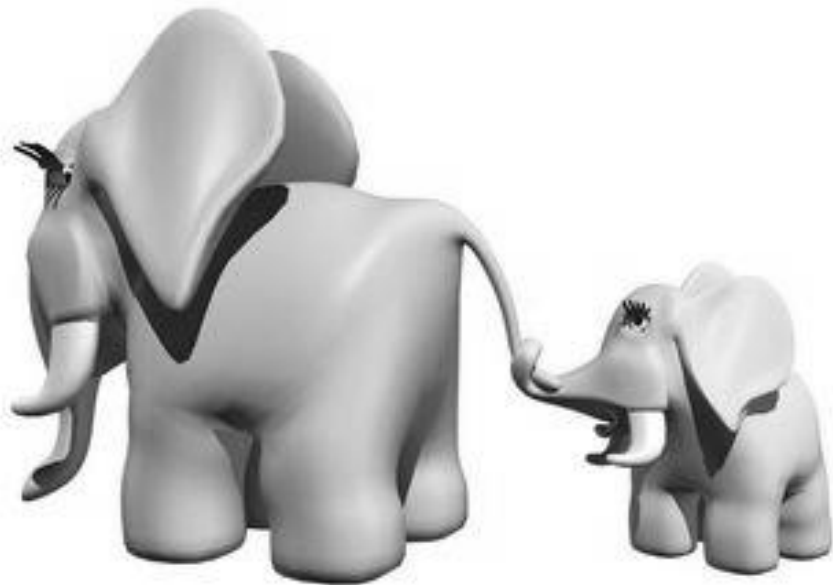
Are humans  
animals?



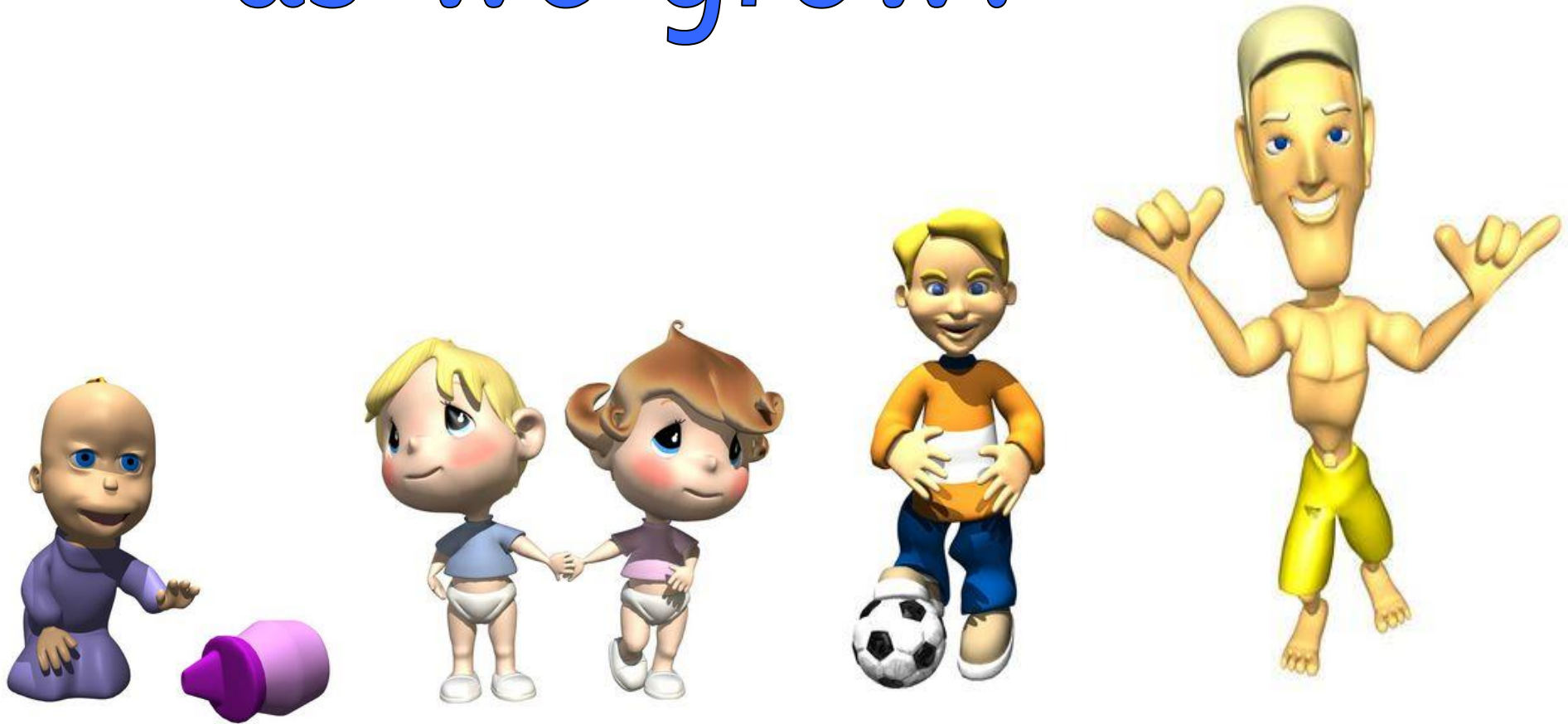


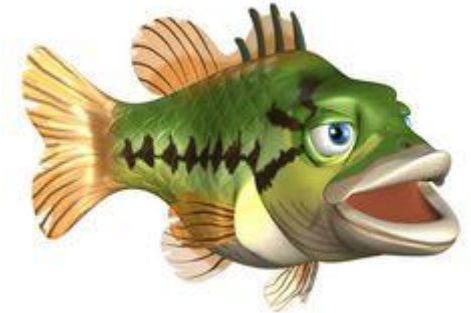


What happens  
to the animals  
when they 'grow'?



# How do we change as we grow?

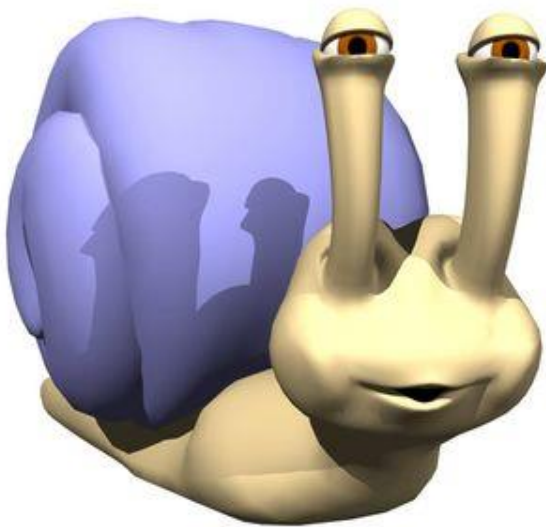




How do these  
animals move?



Which things are alive?  
Which things are not alive?



Why do animals  
need to eat and drink?





*In what ways  
do people differ?*

